

Daikin RX20JV1B

Specifications

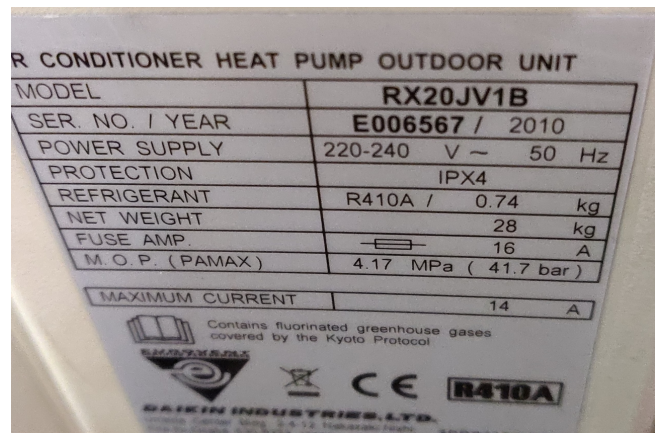
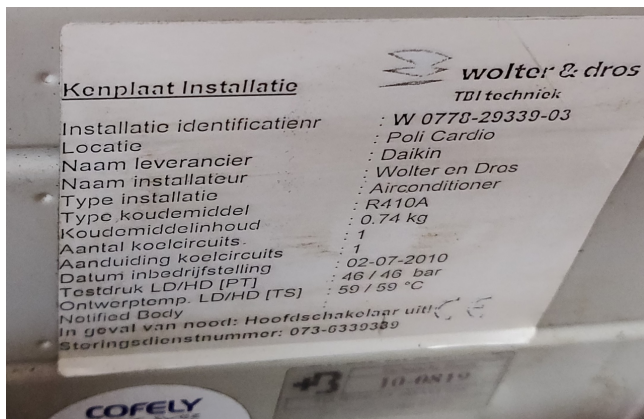
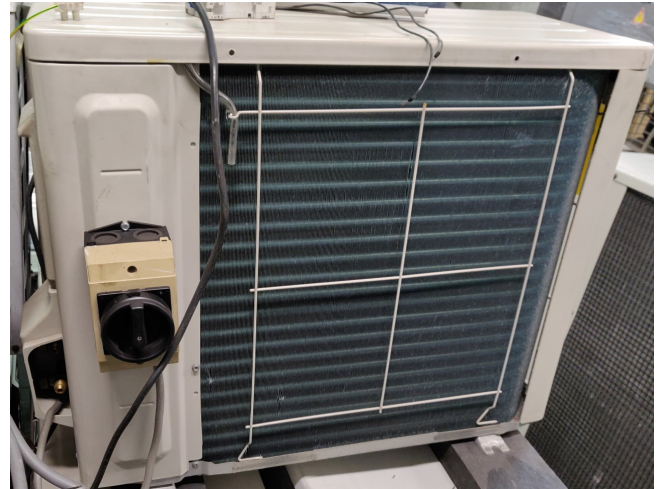
Brand	Daikin
Tipo	RX20JV1B
Product type	Air Cooled Chiller (split-unit)
Capacidad kW	3.5
Capacity Tons	0,99
Refrigerante	Freon
Tipo de Refrigerante	R410A
Peso kg.	28 kg
Sizes	658x275x550 mm (LxWxH)
Compressor(s) type & model	1YC23AEXDA
Number of fans	1
Remarks	YOB 2010
Remarks	29.2 m3/h
Remarks	with 1YC23AEXDA compressor
Stock	1



Description

Used Daikin RX20JV1B

Used, but in very good condition, air conditioner wall mounted split unit build by Daikin type RX20JV1B with a swing compressor type 1YC23AEXDA also build by Daikin. cooling capacity 2.6kW and heating capacity 3.5kW
 *Why choose for HOSBV? Were not only the largest used refrigeration specialist in Europe, but also, we deliver all equipment including an extensive test, warranty and industrial cleaning.
 *Optional we can also perform a new paint job and arrange the logistics.



2 Specifications

2-1 Nominal Capacity and Nominal Input				RX30/V1B	RX25/V1B	RX35/V1B
Indoor Units				FTX20/V1B	FTX25/V1B	FTX35/V1B
For combination indoor units + outdoor units	Cooling capacity	Minimum	KW		1.3	
			Btu/h		4,400	
			Kcal/h		1,120	
		Standard	KW	2.0	2.5	3.3
			Btu/h	6,800	8,500	11,300
			Kcal/h	1,720	2,150	2,840
	Maximum		KW	2.9	3.0	3.5
			Btu/h	8,900	10,200	13,000
			Kcal/h	2,240	2,580	3,270
	Heating capacity	Minimum	KW		1.3	
			Btu/h		4,400	
			Kcal/h		1,120	
		Standard	KW	2.5	2.8	3.5
			Btu/h	8,500	9,600	11,900
			Kcal/h	2,150	2,410	3,010
Piping connections	Maximum		KW	3.5	4.0	4.8
			Btu/h	11,600	13,600	16,400
			Kcal/h	3,010	3,440	4,130
	Drain	mm	OD	18.0		
			Gas	OD	9.52	
			Heat insulation	Both liquid and gas pipes		
	Liquid	mm	OD	6.35		
			Cooling	Nominal	KW	0.550
			Heating	Nominal	KW	0.730
For combination indoor units + outdoor units	Power Input	Nominal	KW	0.550	0.730	0.980
			Heating	Nominal	KW	0.950
			EER	Nominal	3.64	3.27
	COP	Nominal		4.24	4.06	3.76
			Energy Label	Cooling	A	
			Heating		A	
	Annual energy consumption	kWh		275	365	490